



Nancy Lee Palmatory

July 10, 1938 - April 25, 2016

Nancy Lee Palmatory of Rock Hall, MD, died on Monday, April 25, 2016. She was 77.

Born on July 10, 1938, in Rock Hall, she was the daughter of the late Frank Plummer and Elizabeth Shriver. She graduated from Rock Hall High School, Class of 1956. On June 28, 1986, she married Charles K. "Chink" Palmatory, who predeceased her in 2010.

Mrs. Palmatory was a member of the Sgt. Preston Ashley American Legion Ladies Auxiliary in Rock Hall. She enjoyed playing cards and bingo, traveling with her lady friends, and playing with her loving cat, Tyra. She also loved anything Disney.

Mrs. Palmatory is survived by her son, Bill E. Newcomb, Jr., of Rock Hall; and three granddaughters, Hannah Jean Newcomb, Kelsey Newcomb, and Addy Jean Newcomb.

A funeral service will be held on Thursday, April 28, 2016, at 11 a.m. at Fellows, Helfenbein & Newnam Funeral Home in Chestertown, where relatives and friends may call one hour prior (10-11 a.m.). Interment will be in Wesley Chapel Cemetery, following the service.

In lieu of flowers, contributions may be made to the Sgt. Preston Ashley American Legion, Post # 228, P.O. Box 207. Rock Hall, MD 21661.

Cemetery Details

Wesley Chapel Cemetery

6179 Rock Hall Road
Rock Hall, MD

Previous Events

Visitation

APR 28. 10:00 AM - 11:00 AM (ET)

Chestertown Location
130 Speer Road
Chestertown, MD 21620
(410) 778-0055
info@fhfuneralhome.com

Service

APR 28. 11:00 AM (ET)

Chestertown Location
130 Speer Road
Chestertown, MD 21620
(410) 778-0055
info@fhfuneralhome.com

Tribute Wall



“ *Fellows, Helfenbein & Newnam Funeral Home created a Tribute Video in memory of Nancy Lee Palmatory*



Fellows, Helfenbein & Newnam Funeral Home - April 27, 2016 at 08:38 AM



“ *Nancy Lee Palmatory*

October 26, 2023 at 06:42 PM



“ *Nancy Lee Palmatory*

January 28, 2023 at 12:44 PM



“ *Nancy Lee Palmatory*

January 28, 2023 at 08:03 AM



“ *We are so sorry for your loss. Ms Nancy was a sweet, kind person and will be missed by many.
Susan & Todd Barnhardt*

Susan Barnhardt - May 01, 2016 at 09:11 AM

SF

“ *Shirley Foster lit a candle in memory of Nancy Lee Palmatory*



shirley Foster - April 28, 2016 at 09:34 PM

BC

“ *Butch Coleman lit a candle in memory of Nancy Lee Palmatory*



Butch Coleman - April 28, 2016 at 06:08 AM

FR

“ *May you rest in peace, Nancy. Will miss you.*



Frances - April 27, 2016 at 07:15 PM

DH

“ *Denise Hepbron lit a candle in memory of Nancy Lee Palmatory*



Denise Hepbron - April 27, 2016 at 01:18 PM

DH

So sorry for your loss. Much love to you all.

Denise Hepbron - April 27, 2016 at 01:19 PM

MU

“ *Marie Usilton lit a candle in memory of Nancy Lee Palmatory*



Marie Usilton - April 27, 2016 at 12:50 PM

CR

“ *Bill and Cheryl Reihl*



CHERYL REIHL - April 27, 2016 at 09:41 AM

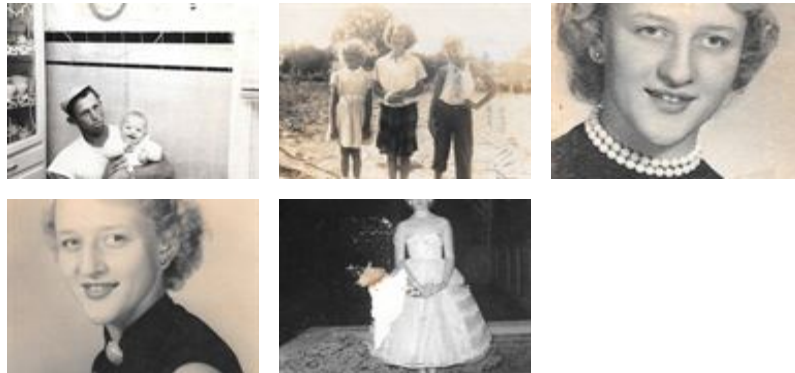
CR

Billy so sorry to hear of your Mom's passing Lots of good times and memories when we were kids

CHERYL REIHL - April 27, 2016 at 09:46 AM



“ 19 files added to the album *Life Tributes*



Fellows, Helfenbein & Newnam Funeral Home - April 27, 2016 at 08:23 AM



“ Susan Martinez lit a candle in memory of Nancy Lee Palmatory



Susan Martinez - April 27, 2016 at 08:01 AM



“ Donna Hubbard Edwards lit a candle in memory of Nancy Lee Palmatory



Donna Hubbard Edwards - April 27, 2016 at 06:38 AM



Charles & I are so sorry for your loss and our thoughts and prayers are with you all.

Donna Hubbard Edwards - April 27, 2016 at 06:40 AM



“ *Our condolences on the loss of your mother and grandmother. May your memories bring you peace at this difficult time.*

Lisa & Michael Harrington



Lisa Harrington - April 26, 2016 at 07:00 PM



“ *Rose Perry lit a candle in memory of Nancy Lee Palmatory*



Rose perry - April 26, 2016 at 02:18 PM



She was a good friend will miss her so much rest in peace Nancy.

Rose perry - April 26, 2016 at 02:20 PM



“ *Mark & Sandy Joiner lit a candle in memory of Nancy Lee Palmatory*



Mark & Sandy Joiner - April 26, 2016 at 12:48 PM



Sorry to hear of Miss Nancy's passing. She was such a dear lady

Mark and Sandy Joiner - April 26, 2016 at 12:49 PM

DH

“ *Denny And Judy Hickman lit a candle in memory of Nancy Lee Palmatory*



Denny and Judy Hickman - April 26, 2016 at 12:38 PM

ME

“ *So sorry to hear of Nancy's passing. We grew up in Piney Neck together-always at each others house. We were also in the same grade in school. Sincere condolences to her son and granddaughters.*

Mary Ann Edwards - April 26, 2016 at 09:45 AM

ME

“ *Mary Ann Edwards lit a candle in memory of Nancy Lee Palmatory*



Mary Ann Edwards - April 26, 2016 at 09:38 AM

PG

“ *Pat Grussing lit a candle in memory of Nancy Lee Palmatory*



Pat Grussing - April 26, 2016 at 08:17 AM

CD

“ Charmayne Shriver Dierker lit a candle in memory of Nancy Lee Palmatory



Charmayne Shriver Dierker - April 26, 2016 at 08:10 AM

SD

“ Sheila Blyman Dlugoborski lit a candle in memory of Nancy Lee Palmatory



Sheila Blyman Dlugoborski - April 26, 2016 at 08:02 AM

BB

“ Brenda Biddle lit a candle in memory of Nancy Lee Palmatory



Brenda Biddle - April 25, 2016 at 06:20 PM

PM

“ Pam And Tommy Marvel lit a candle in memory of Nancy Lee Palmatory



Pam and Tommy Marvel - April 25, 2016 at 05:13 PM

NH

“ *Nancy Hubbard lit a candle in memory of Nancy Lee Palmatory*



Nancy Hubbard - April 25, 2016 at 04:56 PM

NH

So very sorry. Billy my thoughts and prayers are with you.

Nancy Hubbard - April 25, 2016 at 04:57 PM

DN

“ *Dickie Bev Nickerson lit a candle in memory of Nancy Lee Palmatory*



Dickie Bev Nickerson - April 25, 2016 at 04:50 PM

BG

“ *Betty Ann Glenn lit a candle in memory of Nancy Lee Palmatory*



betty ann glenn - April 25, 2016 at 03:18 PM

PS

“ Pres & Sherrie lit a candle in memory of Nancy Lee Palmatory



Pres & Sherrie - April 25, 2016 at 03:02 PM

TS

“ Todd And Diane Smith lit a candle in memory of Nancy Lee Palmatory



Todd and Diane Smith - April 25, 2016 at 02:53 PM

PA

“ Patti lit a candle in memory of Nancy Lee Palmatory



patti - April 25, 2016 at 02:12 PM

RO

“ RJ, Kristi & Taylor Osborn lit a candle in memory of Nancy Lee Palmatory



RJ, Kristi & Taylor Osborn - April 25, 2016 at 02:03 PM